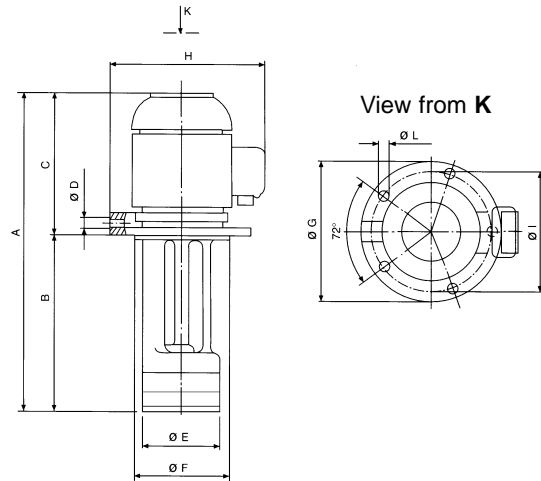


▶ MP Range DIN 5440

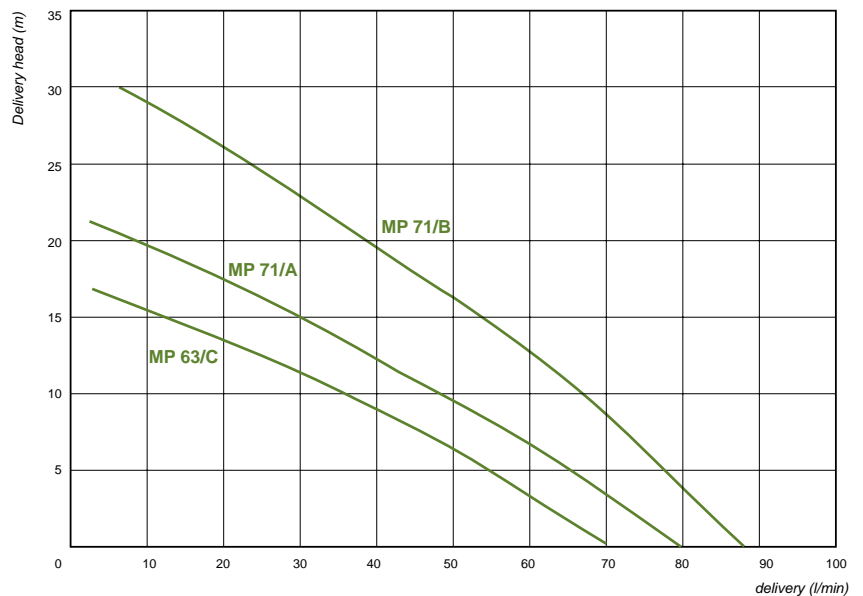


MECHANICAL FEATURES

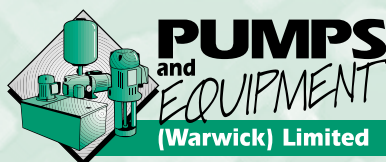
Pump BodyAluminium
 ImpellerBronze
 ShaftSteel
On Request:
 Shaft.....Stainless Steel
 Fan Cover.....Plastic

MOTOR CHARACTERISTICS

ProtectionIP55
 InsulationCL. F
 Voltage.....Eurovoltage 3PH & 1PH
 Terminal Box GlandPG11



TYPE	KW Absorbed	HP	AMPS 400 V	A mm	B mm	C mm	ØD mm	ØE mm	ØF mm	ØG mm	H mm	ØI mm	ØL mm	N°L mm	Weight kg
MP 63/C	0.54	0.72	1.1	390	180	210	3/4"	128	130	180	190	150	9	4	6.84
				440	230										6.92
				490	280										7.00
				540	330										7.08
MP 71/A	0.78	1.04	1.4	400	180	220	3/4"	128	130	180	200	150	9	4	8.83
				450	230										8.99
				500	280										9.15
				550	330										9.31
MP 71/B	0.95	1.27	1.9	430	210	220	3/4"	128	130	180	200	150	9	4	10.40
				480	260										10.56
				530	310										10.72
				580	360										10.89



6 Collins Road, Heathcote Industrial Estate, Warwick CV34 6TF United Kingdom.
telephone: 01926 451744 **fax:** 01926 451284
e-mail: sales@pumps-equip.co.uk **web:** www.pumps-equip.co.uk