

**Usages:**

These pumps are suitable for transferring liquids containing impurities measuring up to 30 micron.

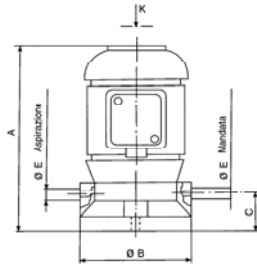
The hydraulic components, namely the brass scroll, the bottom in cast iron and the aluminium pump body, allow the pumps to be used with emulsions, oily substances and liquids in general as long as they are not oxidative for construction materials. Viscosity must not exceed 3° Engler (21 CST).

They must be installed at the top of the tank and must be primed before use. If the pump sucks in air due to lack of liquid, priming must be repeated.

To ensure a long life for the pump, never let it turn when it is dry since the mechanical seal is not self-lubricated.

Where possible, the installation of a suction filter is recommended.

**For other usages you are advised to consult our technical office.**

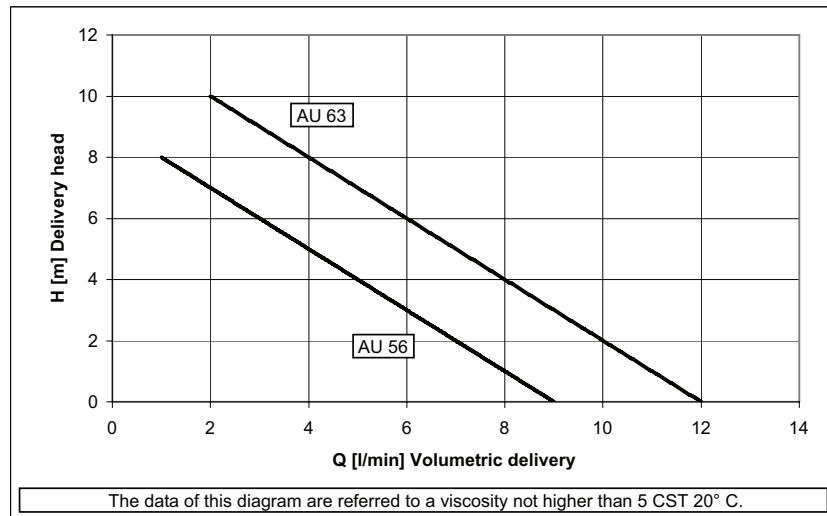
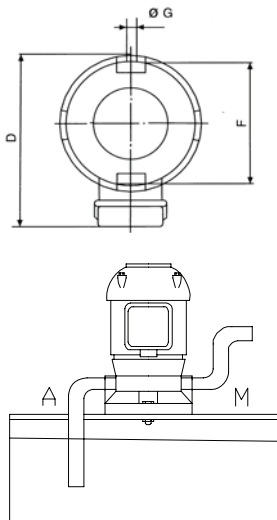


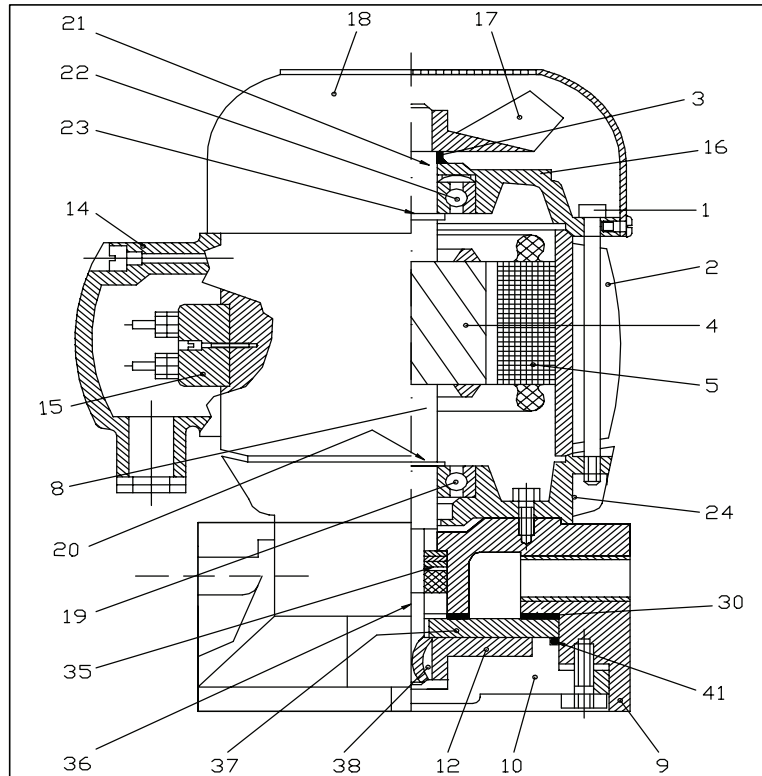
**Dimensions and weights**

TYPE	A mm	ØB mm	C mm	D	ØE mm	ØF mm	ØG mm	Kg.
AU 56	215	115	48	144	3/8" 1/2"	95	7	4,33
AU 63	270	115	48	165	1/2"	95	7	5,05

**Electrical features**

TYPE	KW. Input	Hz. 50		Hz. 60			
		230/400	254-290/440-500	230/400	208-230/440-460	254-277/440-480	318-346/550-600
AU 56	0,16	0,9/0,55	0,7/0,4	1,1/0,64	0,98/0,57	0,9/0,55	0,74/0,42
AU 63	0,30	1,0/0,58	0,76/0,44	1,2/0,7	1,1/0,6	1,0/0,58	0,8/0,45





## Type AU 56

Components	Materials
1 Rod	Steel
2 Frame	Aluminium
3 V ring	NBR ø 12
4 Rotor	
5 Stator	
8 Shaft	Steel C 40
9 Pump body	Aluminium
10 House impeller	Cast iron G 20
12 Impeller	Brass 58
14 Terminal box	Nylon
15 Terminal block	mm. 40x25 6P
16 Non-drive end shield	Aluminium
17 Fan	Nylon
18 Fan cover	Nylon
19 Bearing	6201 ZZ
20 Retaining ring	Seeger ø 12
21 Spring ring	ø 32
22 Bearing	6201 ZZ
23 Retaining ring	Seeger ø 12
24 Drive end shield	Aluminium
30 Gasket	Guarnital
35 Mecanical seal	ø 8
36 Retaining ring	Seeger ø 8
37 Diffuser	Cast iron G 20
38 Spline	3x5x13
41 Or ring	Viton 2,62x71,12

## Type AU 63

Components	Materials
1 Rod	Steel
2 Frame	Aluminium
3 V ring	NBR ø 16
4 Rotor	
5 Stator	
8 Shaft	Steel C 40
9 Pump body	Aluminium
10 House impeller	Cast iron G 20
12 Impeller	Brass 58
14 Terminal box	Nylon
15 Terminal block	mm. 40x25 6P
16 Non-drive end shield	Aluminium
17 Fan	Nylon
18 Fan cover	Nylon
19 Bearing	6202 ZZ
20 Retaining ring	Seeger ø 17
21 Spring ring	ø 35
22 Bearing	6003 ZZ
23 Retaining ring	=
24 Drive end shield	Aluminium
30 Gasket	Guarnital
35 Mecanical seal	ø 8
36 Retaining ring	Seeger ø 8
37 Diffuser	Cast iron G 20
38 Spline	3x5x13
41 Or ring	Viton 2,62x71,12

