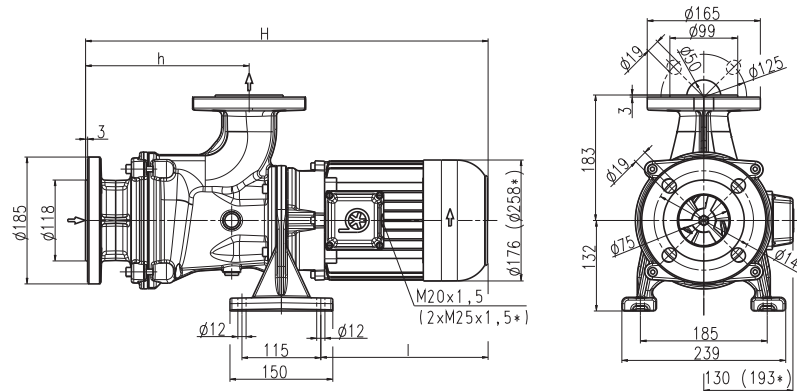
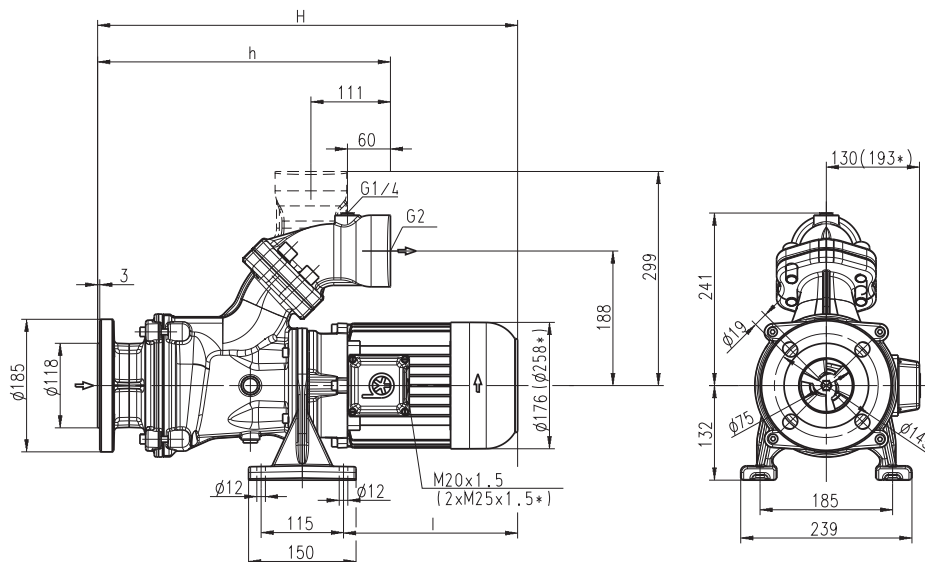


BAL901...903



SBA901...903



*) Dimensions for BAL/SBA902, 903

Type	Vol. del. at manom. del. head l/min / m	Dimensions H mm	h mm	Length l mm	Weight kg	Power kW	Voltage 3~ V	Fre- quency Hz	Rated current A	Speed 1/min
BAL901	600/11	596	239	253	50	2.6	220-240	50	10.9	2850
SBA901			408		53		380-420	50	6.3	2850
							460	60	6.3	3400
BAL902	600/22	742	309	329	83	5.5	220-240	50	22.0	2900
SBA902			478		86		380-420	50	12.5	2900
							460	60	12.5	3450
BAL903	600/36	850	379	367	103	7.5	220-240	50	29	2900
SBA903			548		106		380-420	50	17	2900
							460	60	17	3450

Horizontal end-suction pumps

Axial/semi-open impellers

BAL/SBA901-903

Horizontal End-Suction Pumps

are centrifugal inline pumps with a compact design where the impeller is mounted onto the extended motor shaft.

These pumps are not self-priming and must be gravity fed. All pumps are equipped with a single mechanical seal.

Upon request a second mechanical seal is available to allow for dry-running (-GD).

This pump series is designed for horizontal installations next to a tank and for pumping **air entrained coolant** fluids, such as **water-soluble coolants or cutting oils**, as they occur in **high speed turning, milling or grinding applications**.

The SBA pumps are equipped with the user-friendly 45 degree **flange** connection which allows for either vertical or horizontal pipe connection and the connection of a pressure gauge with G 1/4.

For more information see mechanical features within the technical information section.



Applications

Types of fluid
 water
 coolants
 cooling/cutting oils
 Kinematic viscosity
 ...45 mm²/s (45 cSt)
 Pumping temperature
 0...80° C

Construction

Pump body	cast iron
Cover	cast iron
Impeller axial	cast steel
Impeller radial	cast steel
Shaft	steel
Mechanical seal	SiC
Noise level	
BAL901...SBA901	68 dBA
BAL902...SBA902	71 dBA
BAL903...SBA903	74 dBA

