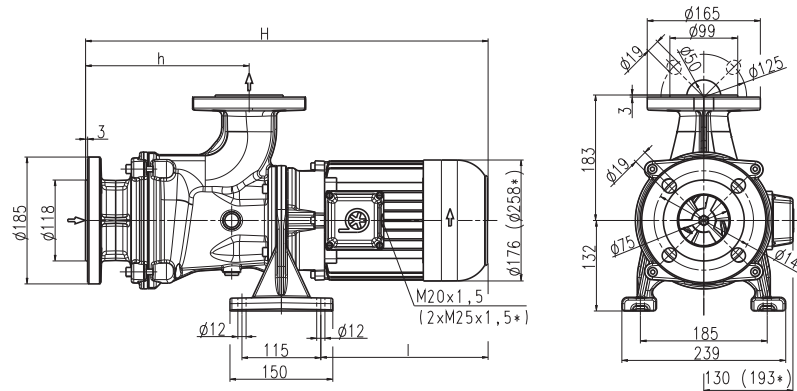
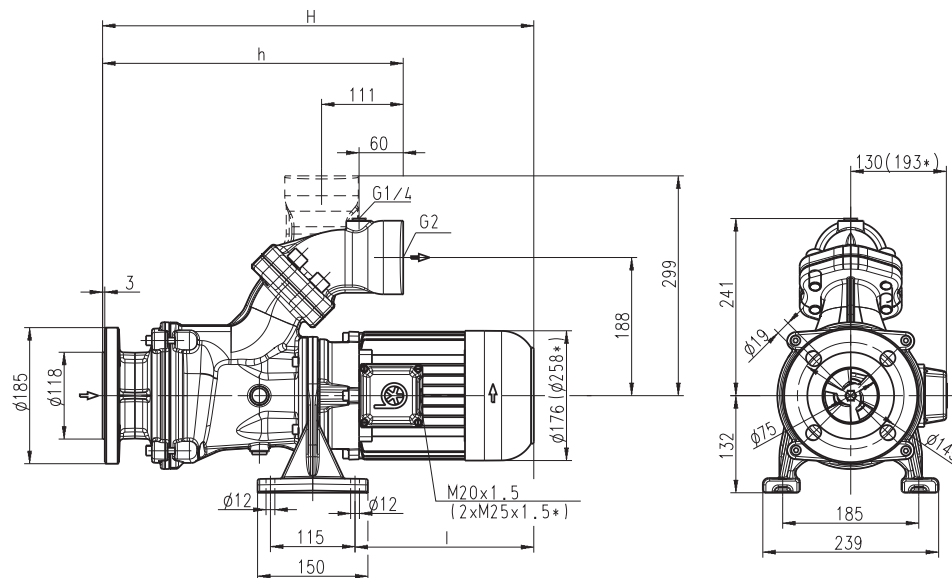


BGL801...803



SBG801...803



*) Dimensions for BGL/SBG802, 803

Type	Vol. del. at manom. del. head l/min / m	Dimensions H mm	h mm	Length l mm	Weight kg	Power kW	Voltage 3 ~ V	Fre- quency Hz	Rated current A	Speed 1/min
BGL801	600/11	596	239	253	50	2.6	220-240	50	10.9	2850
SBG801			408		53		380-420	50	6.3	2850
							460	60	6.3	3400
BGL802	600/20	742	309	329	83	5.5	220-240	50	22.0	2900
SBG802			478		86		380-420	50	12.5	2900
							460	60	12.5	3450
BGL803	600/24	850	379	367	103	7.5	220-240	50	29	2900
SBG803			548		106		380-420	50	17	2900
							460	60	17	3450

Horizontal end-suction pumps

Axial/semi-open impellers

BGL/SBG801-803

Horizontal End-Suction Pumps

are centrifugal inline pumps with a compact design where the impeller is mounted onto the extended motor shaft. These pumps are not self-priming and must be gravity fed. All pumps are equipped with a single mechanical seal. Upon request a second mechanical seal is available to allow for dry-running (-GD). This pump series is designed for horizontal installations next to a tank and for pumping **highly air entrained coolant and cutting oils**, as they occur in **high speed grinding applications**. The SBG pumps are equipped with the user-friendly 45 degree **flange** connection which allows for either vertical or horizontal pipe connection and the connection of a pressure gauge with G 1/4. For more information see mechanical features within the technical information section.



Applications

Types of fluid
 water
 coolants
 cooling/cutting oils
 grinding oils
 Kinematic viscosity
 ...45 mm²/s (45 cSt)
 Pumping temperature
 0...80° C

Construction

Pump body	cast iron
Cover	cast iron
Impeller axial	cast steel
Impeller radial	cast steel
Shaft	steel
Mechanical seal	SiC
Noise level	
BGL801...SBG801	70 dBA
BGL802...SBG802	73 dBA
BGL803...SBG803	75 dBA

