

# Immersion pumps

# Type EPC 80B-80C-90B



**Usages:**

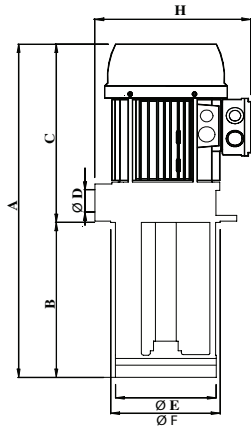
These pumps are suitable for transferring clean liquids containing impurities measuring up to 30 micron. The hydraulic components, namely the brass impeller, scroll and cast iron pump body, allow the pumps to be used with emulsions and oily substances, glycols and liquids in general, as long as they are not oxidative for the construction materials. Viscosity must not exceed 3° Engler (21 CST). The temperature of the liquid must not exceed 90° C.

**They are usually used on:**

- Boring centres
- Cooling exchanges

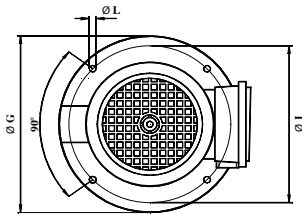
They should usually be installed on a tank, with a capacity in proportion to the flow rate, at about 3-4 cm. from the bottom. It is important to check that the maximum level of the liquid in the tank always remains 3 – 4 cm. lower than the flange (see figure).

**For other usages you are advised to consult our technical office.**



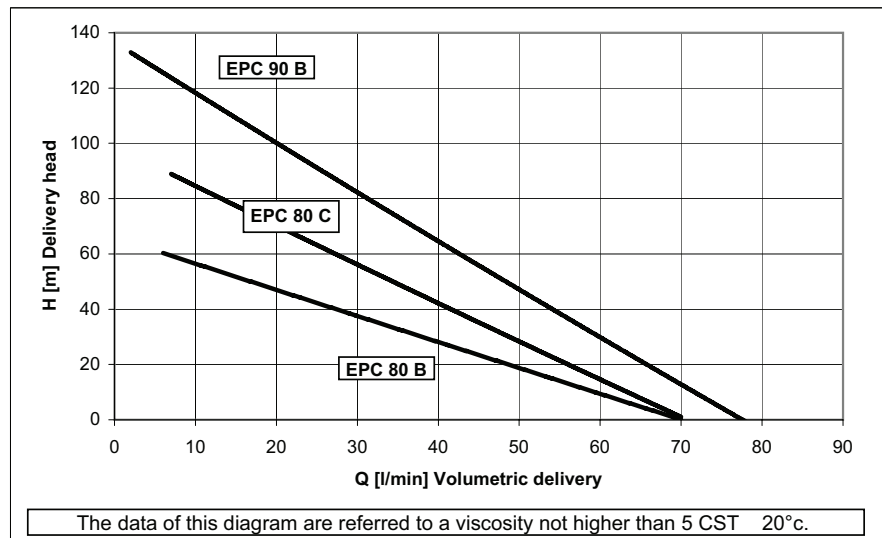
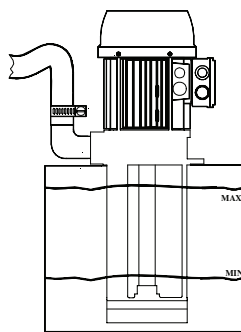
**Table of dimensions and weights**

| TYPE    | A mm | B mm | C mm | ØD   | ØE mm | ØF mm | ØG mm | H mm | ØI mm | ØL mm  | Kg.    |
|---------|------|------|------|------|-------|-------|-------|------|-------|--------|--------|
| EPC 80B | 381  | 100  | 281  | 3/4" | 98    | 100   | 130   | 200  | 115   | 7 N. 4 | 13,950 |
|         | 411  | 130  |      |      |       |       |       |      |       |        | 14,250 |
|         | 461  | 180  |      |      |       |       |       |      |       |        | 14,450 |
|         | 511  | 230  |      |      |       |       |       |      |       |        | 14,650 |
|         | 561  | 280  |      |      |       |       |       |      |       |        | 14,820 |
|         | 641  | 360  |      |      |       |       |       |      |       |        | 15,380 |
| EPC 80C | 396  | 115  | 281  | 3/4" | 98    | 100   | 130   | 200  | 115   | 7 N. 4 | 16,220 |
|         | 426  | 145  |      |      |       |       |       |      |       |        | 16,520 |
|         | 476  | 195  |      |      |       |       |       |      |       |        | 16,720 |
|         | 526  | 245  |      |      |       |       |       |      |       |        | 16,920 |
|         | 576  | 295  |      |      |       |       |       |      |       |        | 17,090 |
|         | 656  | 375  |      |      |       |       |       |      |       |        | 17,650 |
| EPC 90B | 460  | 140  | 320  | 3/4" | 98    | 100   | 130   | 220  | 115   | 7 N. 4 | 30,300 |
|         | 490  | 170  |      |      |       |       |       |      |       |        | 30,600 |
|         | 540  | 220  |      |      |       |       |       |      |       |        | 30,800 |
|         | 590  | 270  |      |      |       |       |       |      |       |        | 31,000 |
|         | 640  | 320  |      |      |       |       |       |      |       |        | 31,200 |
|         | 720  | 400  |      |      |       |       |       |      |       |        | 31,800 |

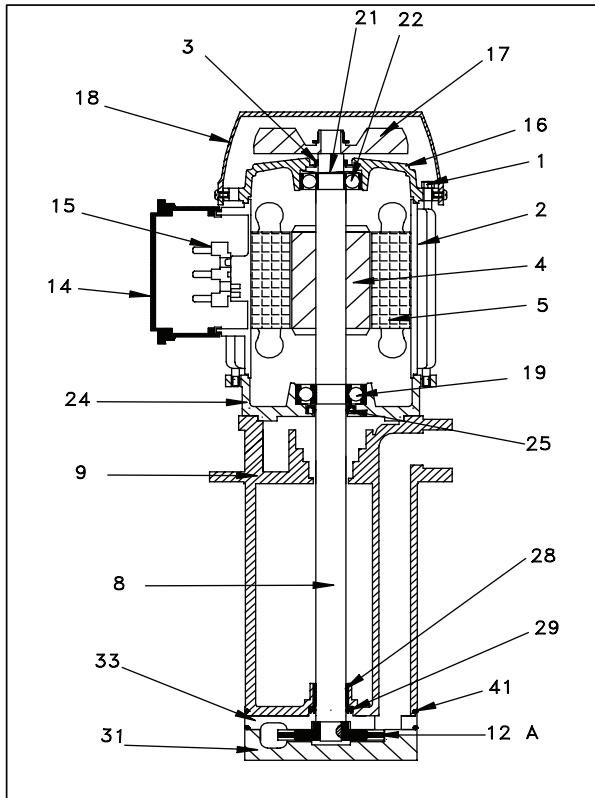


**Electrical features**

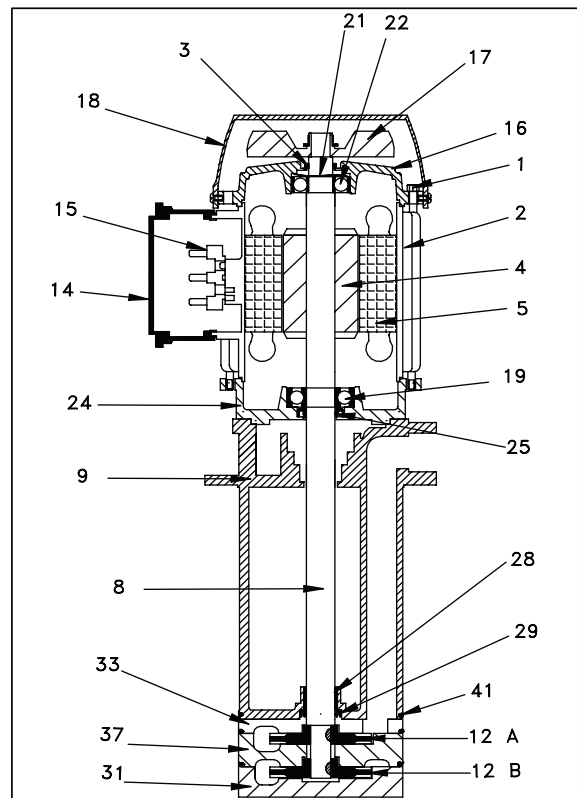
| TYPE    | KW. Input | Hz. 50  |                 | Hz. 60    |                 |                 |                 |
|---------|-----------|---------|-----------------|-----------|-----------------|-----------------|-----------------|
|         |           | 230/400 | 254-290/440-500 | 230/400   | 208-230/440-460 | 254-277/440-480 | 318-346/550-600 |
| EPC 80B | 1,70      | 5,0/2,9 | 4,0/2,32        | 6,0/3,48  | 5,3/3,1         | 5,0/2,9         | 4,2/2,42        |
| EPC 80C | 2,60      | 6,9/4,0 | 5,5/3,2         | 8,3/4,8   | 7,3/4,2         | 6,9/4,0         | 5,7/3,34        |
| EPC 90B | 3,00      | 9,3/5,4 | 7,8/4,5         | 11,2/6,48 | 9,7/5,6         | 9,3/5,4         | 8,13/4,7        |



EPC 80 B



EPC 80 C - 90 B



EPC 80B

| Components              | Materials      |
|-------------------------|----------------|
| 1 Rod                   | Steel          |
| 2 Frame                 | Aluminium      |
| 3 V ring                | NBR Ø 20       |
| 4 Rotor                 |                |
| 5 Stator                |                |
| 8 Shaft                 | Steel C 40**   |
| 9 Pump body             | Cast iron G 20 |
| 12 Impeller             | Brass 58       |
| 14 Terminal box         | Nylon          |
| 15 Terminal block       | mm. 50x32 6P   |
| 16 Non-drive end shield | Aluminium      |
| 17 Fan                  | Nylon          |
| 18 Fan cover            | Nylon***       |
| 19 Bearing              | 6205 ZZ        |
| 21 Spring ring          | ø 47           |
| 22 Bearing              | 6204 ZZ        |
| 24 Reduction flange     | Aluminium      |
| 25 Sealing ring         | NBR 25X40X7    |
| 28 Bronze bearing       | 19x17x15       |
| 29 Sealing ring         | NBR 17x25x4    |
| 31 House impeller       | Cast iron G 20 |
| 33 Reduction flange     | Cast iron G 20 |
| 41 OR ring ( N. 2 )     | NBR 82,27x1,78 |

EPC 80C

| Components              | Materials      |
|-------------------------|----------------|
| 1 Rod                   | Steel          |
| 2 Frame                 | Aluminium      |
| 3 V ring                | NBR Ø 20       |
| 4 Rotor                 |                |
| 5 Stator                |                |
| 8 Shaft                 | Steel C 40**   |
| 9 Pump body             | Cast iron G 20 |
| 12 Impeller             | Brass 58       |
| 14 Terminal box         | Nylon          |
| 15 Terminal block       | mm. 50x32 6P   |
| 16 Non-drive end shield | Aluminium      |
| 17 Fan                  | Nylon          |
| 18 Fan cover            | Nylon***       |
| 19 Bearing              | 6205 ZZ        |
| 21 Spring ring          | ø 47           |
| 22 Bearing              | 6204 ZZ        |
| 24 Reduction flange     | Aluminium      |
| 25 Sealing ring         | NBR 25X40X7    |
| 28 Bronze bearing       | 19x17x15       |
| 29 Sealing ring         | NBR 17x25x4    |
| 31 House impeller       | Cast iron G 20 |
| 33 Reduction flange     | Cast iron G 20 |
| 37 Diffuser             | Cast iron G 20 |
| 41 OR ring ( N. 3 )     | NBR 82,27x1,78 |

EPC 90B

| Components              | Materials      |
|-------------------------|----------------|
| 1 Rod                   | Steel          |
| 2 Frame                 | Aluminium      |
| 3 V ring                | NBR Ø 25       |
| 4 Rotor                 |                |
| 5 Stator                |                |
| 8 Shaft                 | Steel C 40**   |
| 9 Pump body             | Cast iron G 20 |
| 12 Impeller             | Brass 58       |
| 14 Terminal box         | Nylon          |
| 15 Terminal block       | mm. 50x32 6P   |
| 16 Non-drive end shield | Aluminium      |
| 17 Fan                  | Nylon          |
| 18 Fan cover            | Nylon***       |
| 19 Bearing              | 6206 ZZ        |
| 21 Spring ring          | ø 52           |
| 22 Bearing              | 6205 ZZ        |
| 24 Reduction flange     | Aluminium      |
| 25 Sealing ring         | NBR 25X40X7    |
| 28 Bronze bearing       | 19x17x15       |
| 29 Sealing ring         | NBR 17x25x4    |
| 31 House impeller       | Cast iron G 20 |
| 33 Reduction flange     | Cast iron G 20 |
| 37 Diffuser             | Cast iron G 20 |
| 41 OR ring ( N. 3 )     | NBR 82,27x1,78 |

