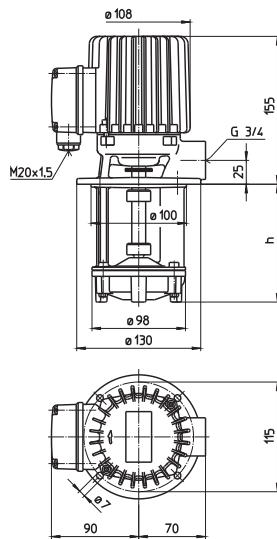


Free flow-immersion pumps

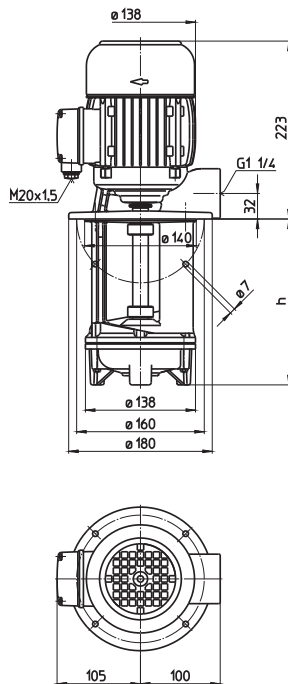
Semi-open impellers

FT35-FTA140

FT35



FTA140



Type	Vol. del. at manom. del. head l/min /m	Height H mm	Depth of immersion h mm	Weight kg	Power kW	Voltage 3 ~ V	Fre- quency Hz	Rated current A	Speed 1/min
FT35/100	40/2	155	100	5.2	0.21	220-240	50	0.71	2800
130			130	5.5					
180			180	5.9		380-420	50	0.41	2800
230			230	6.2					
280			280	6.5					
360			360	7.3	460	60	0.41	3300	
FTA140/130	150/2	223	130	13.5	0.55	220-240	50	2.50	2750
210			210	14.0					
280			280	14.5		380-420	50	1.45	2750
360			360	15.0					
450			450	17.0					
560			560	18.5					



Free flow-immersion pumps

Semi-open impellers

FT35-FTA140

Free Flow-Immersion Pumps

series FT/FTA are provided to lift coolant for filtering.

Coarse shreds can be transported together with liquids.

The pump inlet and pump discharge port have the same dimensions.

Applications

Types of fluid
 water
 coolants
 cooling/cutting oils
 Kinematic viscosity
 ...90 mm²/s (90 cSt)
 Pumping temperature
 0...60° C

Construction

Pump body	cast iron
Cover	cast iron
Impeller	brass
Shaft	steel
Optional:	
Cover	POM (FT35)
Impeller	POM
	cast iron
Noise level	
FT35	45 dBA
FTA140	60 dBA

