



Usages:

The pumps are suitable to transfer liquids containing impurities measuring up to 2-3 mm. The hydraulic components, namely the brass impeller, the scroll and the aluminium pump body allow the pumps to be used with water, emulsions and oily substances in general with a maximum viscosity of 3° Engler (21 CST).

The temperature of the liquid must not exceed 90° C.

They are usually used on:

- Machine tools** (milling machines – lathes - drills)
- Glass processing machines** (TRI version)
- Surface treatment systems** (version in cast iron)*
- Filtration systems**
- Air-conditioning systems.**

They should usually be installed on a tank, with a capacity in proportion to the flow rate, at about 4 – 5 cm. from the bottom. It is important to check that the maximum level of the liquid in the tank always remains 3 – 4 cm. lower than the flange (see figure).

In cases where the liquid is particularly dirty, the user is recommended to construct the tank in compartments to allow the dirt to deposit before it is stirred up by the pump.

For other usages you are advised to consult our technical office.

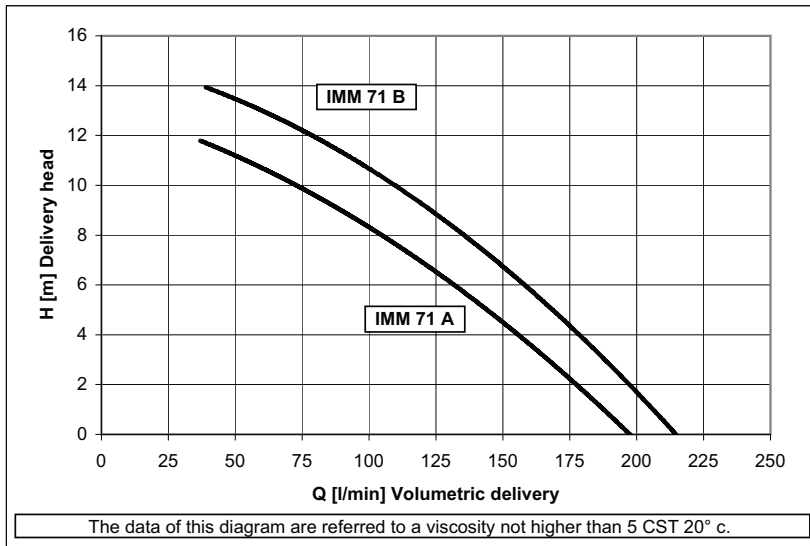
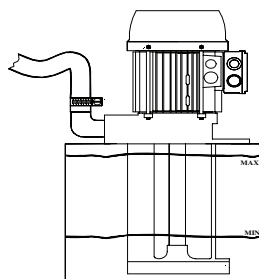
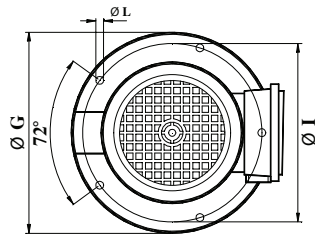
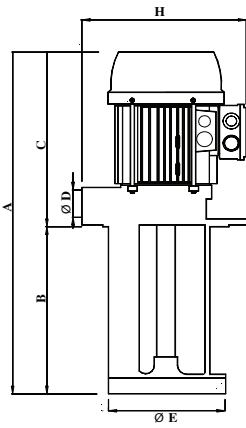
Table of dimensions and weights

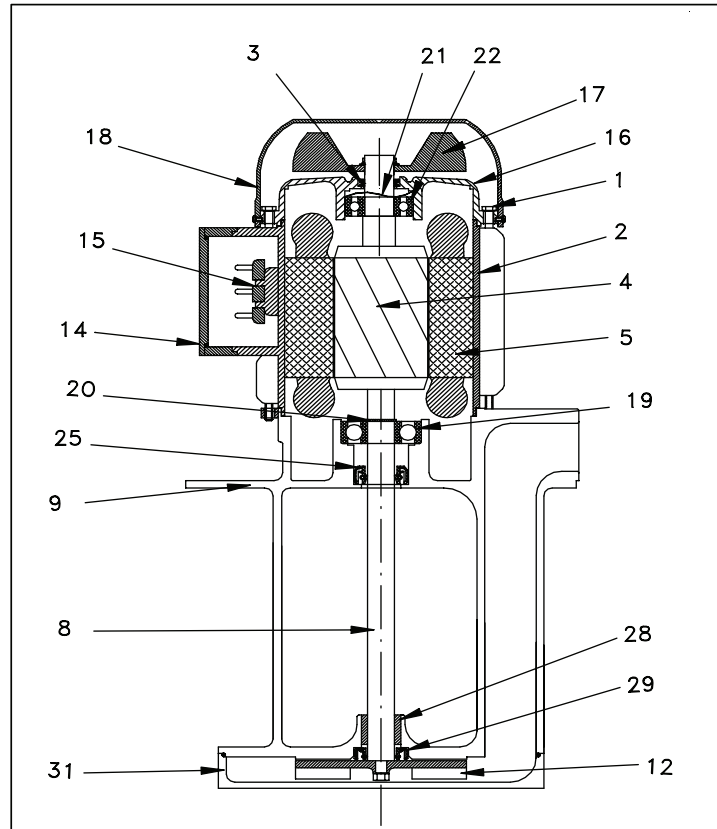
TYPE	A mm	B mm	C mm	ØD mm	ØE mm	ØF mm	ØG mm	H mm	ØI mm	ØL mm	Kg.
IMM 71 A	440	200 T	240	1"	190	-	230	225	204	9 N. 5	9,35
	490	250 T									9,75
	565	325* T									10,05
	680	440									11,30
IMM 71 B	440	200 T	240	1"	190	-	230	225	204	9 N. 5	10,25
	490	250 T									10,60
	565	325* T									10,90
	680	440									12,20

On request: T = execution TRI * = cast iron pump body

Electrical features

Type	KW. Input	Hz. 50		Hz. 60			
		230/400	254-290/440-500	230/400	208-230/440-460	254-277/440-480	318-346/550-600
IMM 71 A	0,53	2,7/1,6	2,1/1,2	3,2/1,8	3,1/1,8	2,7/1,6	2,3/1,3
IMM 71 B	0,78	3,3/1,9	2,6/1,5	4,0/2,3	3,6/2,1	3,3/1,9	2,8/1,6





Type IMM 71 A

Components	Materials
1 Rod	Steel
2 Frame	Aluminium
3 V-Ring \varnothing 16	NBR
4 Rotor	
5 Stator	
8 Shaft	Steel C 40**
9 Pump body	Aluminium*
12 Impeller	Brass 58*
14 Terminal box	Nylon
15 Terminal block	mm. 40x25 6P
16 Non-drive end shield	Aluminium
17 Fan	Nylon
18 Fan cover	Nylon***
19 Bearing	6204 ZZ
21 Spring ring	\varnothing 40
22 Bearing	6203 ZZ
25 Sealing ring	NBR 20X35X7
28 Bronze bearing	23X20X20
29 Sealing ring	NBR 20X32X7
31 House impeller	Aluminium*
41 O-Ring	NBR 180X2

Type IMM 71 B

Components	Materials
1 Rod	Steel
2 Frame	Aluminium
3 V-Ring \varnothing 16	NBR
4 Rotor	
5 Stator	
8 Shaft	Steel C 40*
9 Pump body	Aluminium*
12 Impeller	Brass 58*
14 Terminal box	Nylon
15 Terminal block	mm. 40x25
16 Non-drive end shield	Aluminium
17 Fan	Nylon
18 Fan cover	Nylon***
19 Bearing	6204 ZZ
21 Spring ring	\varnothing 40
22 Bearing	6203 ZZ
25 Sealing ring	NBR 20X35
28 Bronze bearing	23X20X20
29 Sealing ring	NBR 20X32
31 House impeller	Aluminium*
41 O-Ring	NBR 180X

