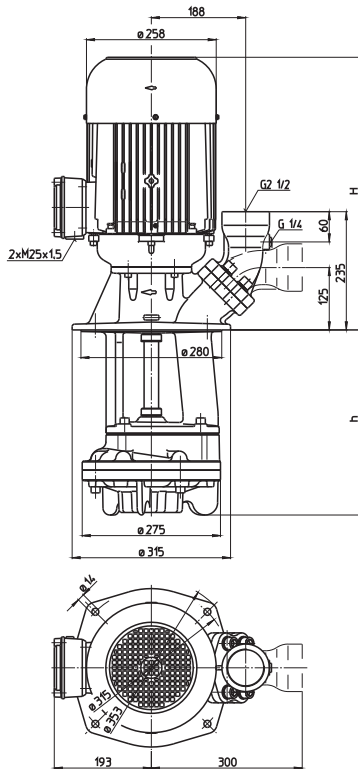


Quick suctioning immersion pumps

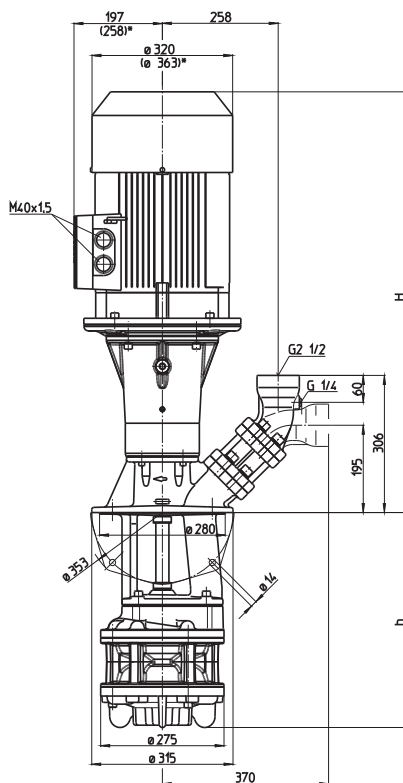
Axial/semi-open impellers

SAL1600-2500

SAL1600, 2000



SAL1602, 2500



*) Dimensions for SAL2002

Type	Vol. del. at manom. del. head l/min /m	Height H mm	Depth of immersion h mm	Weight kg	Power kW	Voltage 3 ~ V	Fre- quency Hz	Rated current A	Speed 1/min
SAL1600/310	1300/15	542	310	102	7.5	220-240	50	29	2900
440			440	104					
560			560	106					
810			810	112					
1060			1060	114					
SAL2000/310	1600/15	592	310	121	10.0	220-240	50	40	2900
440			440	123					
560			560	126					
810			810	132					
1060			1060	134					
SAL1602/420	1300/37	938	420	180	18.5	400	50	32	2940
550			550	182					
670			670	184	21.3	460	60	31.5	3540
920			920	190					
1170			1170	192					
SAL2002/420	1600/45	1022	420	243	22.0	400	50	39	2945
550			550	247					
670			670	251	24.5	460	60	37	3545
920			920	260					
1170			1170	264					
SAL2500/340	2200/20	938	340	149	18.5	400	50	32	2940
470			470	150					
590			590	152	21.3	460	60	31.5	3540
840			840	169					
1090			1090	171					



Quick suctioning immersion pumps

Axial/semi-open impellers

SAL1600-2500

Quick Suctioning Immersion Pumps

equipped with the patented "BRINK-MANN's Suction De-aeration System" are excellently suited to pumping **extremely inflated fluids** (emulsions resp. cooling/cutting oils) as they occur in heavy cutting when turning, milling or grinding. The quick suctioning immersion pumps reach stable working conditions as soon as the liquid level reaches the suction inlet.

The SAL serie offers a **flange** with pressure gauge connection port.

The flange can be rotated for either horizontal or vertical pipe connections.

Applications

Types of fluid
 water
 coolants
 cooling/cutting oils
 Kinematic viscosity
 ...90 mm²/s (90 cSt)
 Pumping temperature
 0...80° C

Construction

Pump body	cast iron
Cover	cast iron
Impeller axial	cast steel
Impeller radial	cast steel
Shaft	steel

