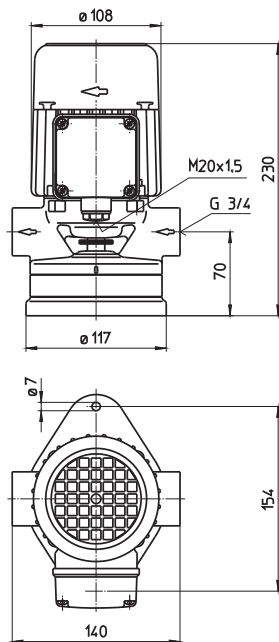
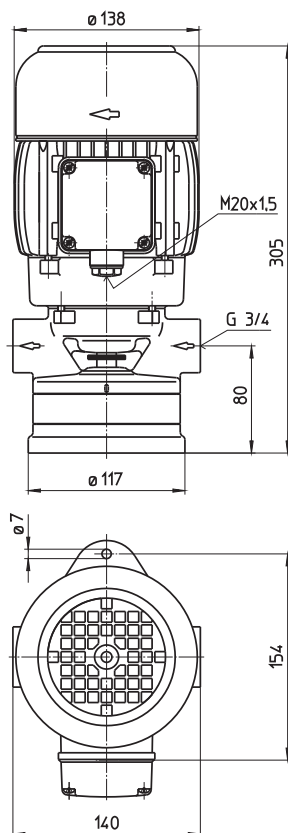


SB20, 40



SB60



Type	Vol. del. at manom. del. head l/min /m	Weight kg	Power kW	Voltage 3 ~ V	Fre- quency Hz	Rated current A	Speed 1/min
SB20	20/2	5.8	0.14	220-240	50	0.71	2700
				380-420	50	0.41	2700
				460	60	0.41	3200
SB40	2/40	6.4	0.22	220-240	50	0.95	2700
				380-420	50	0.55	2700
				460	60	0.55	3200
SB60	2/60	9.9	0.63	220-240	50	2.6	2750
				380-420	50	1.5	2750
				460	60	1.5	3250

Suction Pumps

are self-priming following the initial priming, and operate according to the by-pass duct principle. We recommend pump models featuring bronze body elements for pumping water without anticorrosion additives.

The dimensions are based on standard specification **EN 12157**.

Applications

Types of fluid
 coolants
 cooling/cutting oils
 fuel oil
 water (with anticorrosive additive)

Kinematic viscosity
 ...60 mm²/s (60 cSt)

Suction height
 1 - 2 m without foot-located valve
 4 - 6 m with foot-located valve

Construction

Pump body	cast iron
Cover	cast iron
Impeller	brass
Shaft	steel
Mechanical seal	graphite based
O-rings	Viton
Optional:	
Pump body	bronze (SB20...SB40)
Cover	bronze (SB20...SB40)
Impeller	CrNi-steel
Noise level	
SB20...SB40	54 dBA
SB60	64 dBA

