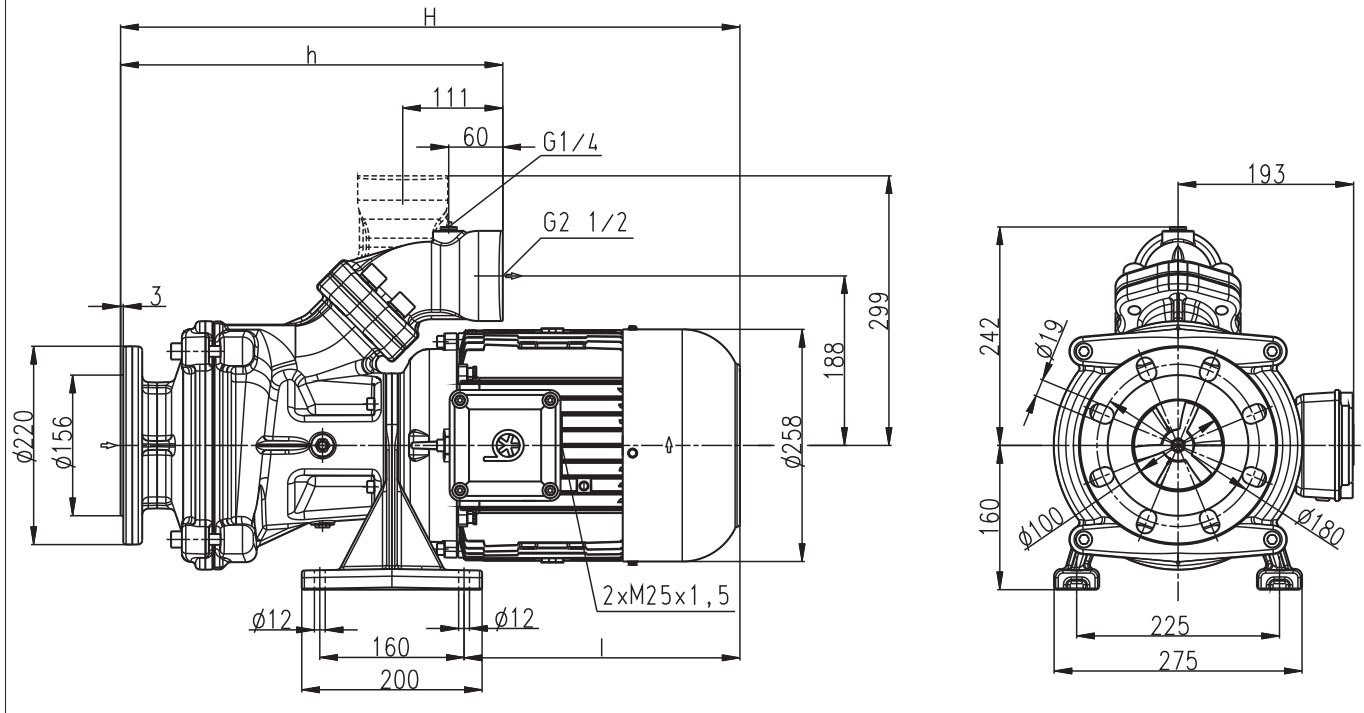


SBA1600...2000



Type	Vol. del. at manom. del. head l/min /m	Dimensions H mm	h mm	Length l mm	Weight kg	Power kW	Voltage 3~ V	Fre- quency Hz	Rated current A	Speed 1/min
SBA1600	1400/15	724	424	343	100	7.5	220-240	50	29	2900
							380-420	50	17	2900
							460	60	17	3450
SBA2000	1600/19	774	424	393	119	10.0	220-240	50	40	2900
							380-420	50	23	2900
							460	60	23	3450

Horizontal end-suction pumps

Axial/semi-open impellers

SBA1600-2000

Horizontal End-Suction Pumps

are centrifugal inline pumps with a compact design where the impeller is mounted onto the extended motor shaft.

These pumps are not self-priming and must be gravity fed. All pumps are equipped with a single mechanical seal.

Upon request a second mechanical seal is available to allow for dry-running (-GD).

This pump series is designed for horizontal installations next to a tank and for pumping **air entrained coolant** fluids, such as **water-soluble coolants or cutting oils**, as they occur in **high speed turning, milling or grinding applications**.

The SBA pumps are equipped with the user-friendly 45 degree **flange** connection which allows for either vertical or horizontal pipe connection and the connection of a pressure gauge with G ¼.

For more information see mechanical features within the technical information section.

Applications

Types of fluid
 water
 coolants
 cooling/cutting oils
 Kinematic viscosity
 ...45 mm²/s (45 cSt)
 Pumping temperature
 0...80° C

Construction

Pump body	cast iron
Cover	cast iron
Impeller axial	cast steel
Impeller radial	cast steel
Shaft	steel
Mechanical seal	SiC
Noise level SBA1600...SBA2000	74 dBA

