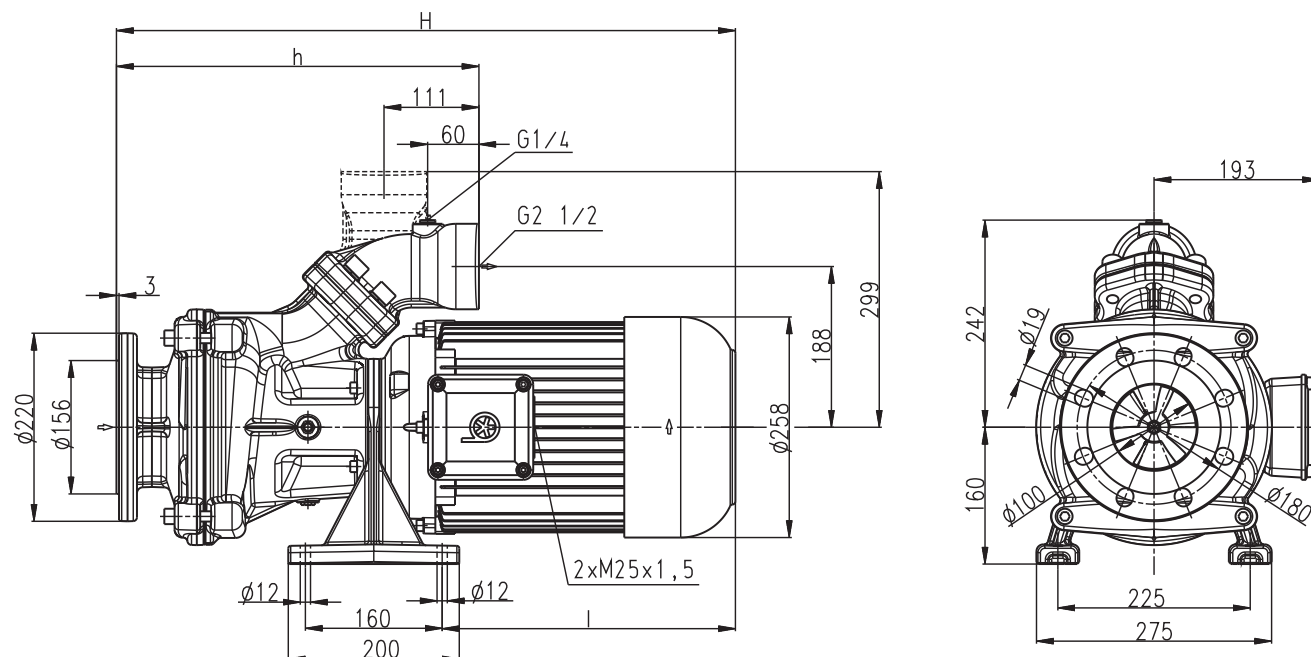


Horizontal end-suction pumps

Axial/semi-open impellers

SBG1700

SBG1700



Type	Vol. del. at manom. del. head l/min /m	Dimensions H mm	h mm	Length l mm	Weight kg	Power kW	Voltage 3 ~ V	Fre- quency Hz	Rated current A	Speed 1/min
SBG1700	1500/20	774	424	393	119	10.0	220-240	50	40	2900
							380-420	50	23	2900
							460	60	23	3450



Horizontal end-suction pumps

Axial/semi-open impellers

SBG1700

Horizontal End-Suction Pumps

are centrifugal inline pumps with a compact design where the impeller is mounted onto the extended motor shaft.

These pumps are not self-priming and must be gravity fed. All pumps are equipped with a single mechanical seal.

Upon request a second mechanical seal is available to allow for dry-running (-GD).

This pump series is designed for horizontal installations next to a tank and for pumping **highly air entrained coolant and cutting oils**, as they occur in **high speed grinding applications**.

The SBG pumps are equipped with the user-friendly 45 degree **flange** connection which allows for either vertical or horizontal pipe connection and the connection of a pressure gauge with G 1/4.

For more information see mechanical features within the technical information section.

Applications

Types of fluid
water
coolants
cooling/cutting oils
grinding oils

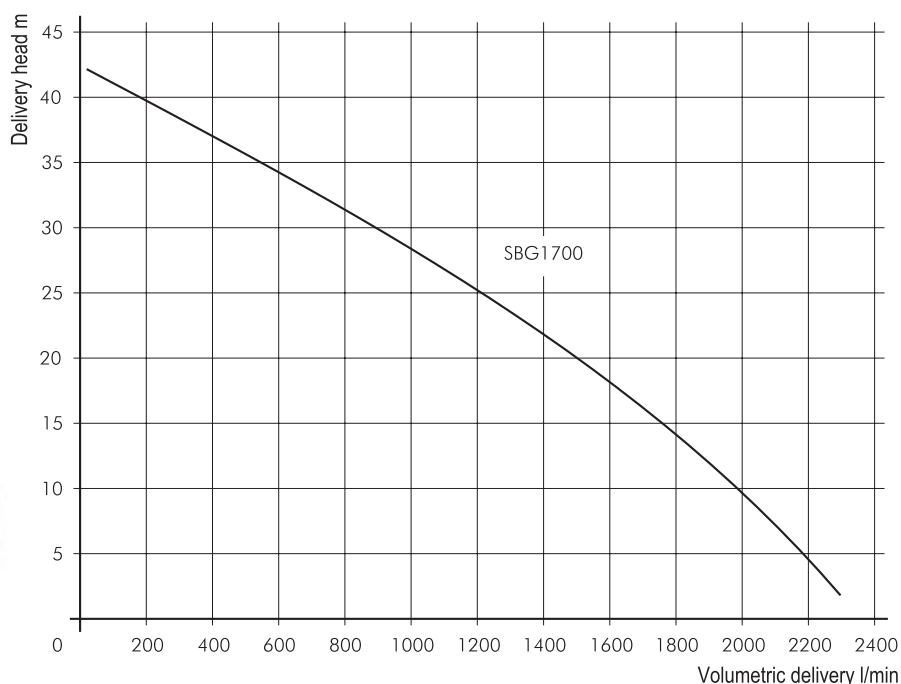
Kinematic viscosity
...45 mm²/s (45 cSt)

Pumping temperature
0...80° C

Construction

Pump body	cast iron
Cover	cast iron
Impeller axial	cast steel
Impeller radial	cast steel
Shaft	steel
Mechanical seal	SiC

Noise level SBG1700	74 dBA
------------------------	--------



Pumps & Equipment (Warwick) Ltd. 6 Collins Road Heathcote Industrial Estate, Warwick CV34 6TF
Telephone: 01926 451744 | Fax: 01926 451284 | www.pumps-equip.co.uk