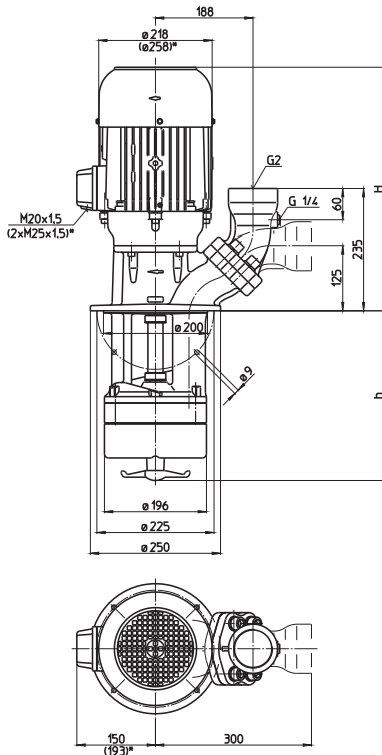
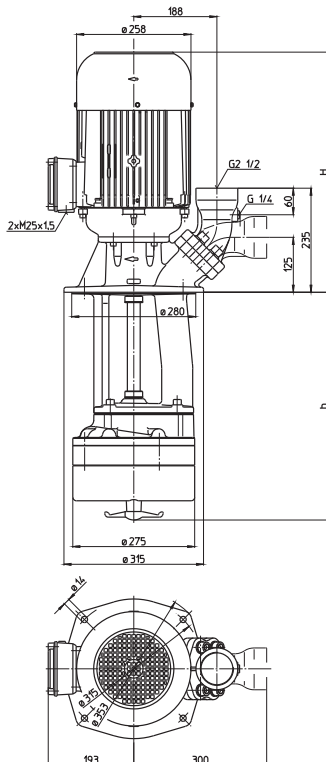


SFC820...1120



SFC1520...2320



*) Dimensions for SFC1120
Dimensions SFC2320 above flange as with
SGL1402

Type	Vol. del. at manom. del. head l/min /m	Height H mm	Depth of im- mersion h mm	Weight kg	Power kW	Voltage 3 ~ V	Fre- quency Hz	Rated current A	Speed 1/min
SFC820/290	400/10	487	292	69	4.0	220-240	50	16.5	2900
390			392	71		380-420	50	9.5	2900
520			522	73		460	60	9.5	3450
640			642	76					
SFC1120/290	500/12	504	292	91	5.5	220-240	50	22.0	2900
390			392	93		380-420	50	12.5	2900
520			522	95		460	60	12.5	3450
640			642	98					
SFC1520/370	700/16	542	372	123	7.5	220-240	50	29	2900
500			502	125		380-420	50	17	2900
620			622	127		460	60	17	3450
SFC1820/370	800/20	592	372	142	10.0	220-240	50	40	2900
500			502	145		380-420	50	23	2900
620			622	147		460	60	23	3450
SFC2320/400	900/28	938	400	160	18.5	400	50	32	2940
530			530	163					
650			650	166	21.3	460	60	31.5	3540

Cutter pumps

Axial/semi-open impellers

SFC820-2320

Cutter Pumps

The cutter pumps of the **series SFC** are capable of cutting aluminium chips and similar materials and pumping of these materials along with the coolant fluid. An agitator located at the pump suction helps to break up and separate any large bundles of chips or birds nests which reach the pump suction.

The specially made cutting unit (> 60HRC) is cutting chips and the above located semi-open impeller allows with its large clearances to pump the particles along with the coolant fluid from the machine back to the filter. The SFC pumps are capable of handling chip to coolant ratios of up to 1.5% by weight.

The SFC pumps are equipped with the user-friendly 45 degree **flange** connection which allows for either vertical or horizontal pipe connection and the connection of a pressure gauge with G 1/4.

For more information see mechanical features within the technical information section.



Applications

Types of fluid
 water
 coolants
 cooling/cutting oils
 Max. chip to coolant ratio by weight:
 1.5 %
 Chip material:
 Aluminium
 Chip geometry:
 Chip bundles
 Kinematic viscosity
 ...90 mm²/s (90 cSt)
 Pumping temperature
 0...80° C

Construction

Pump body	cast iron
Cover	cast iron
Impeller radial	cast steel
Cutting unit	Hardened (>60 HRC)
Agitator	Highly ductile steel
Shaft	steel

