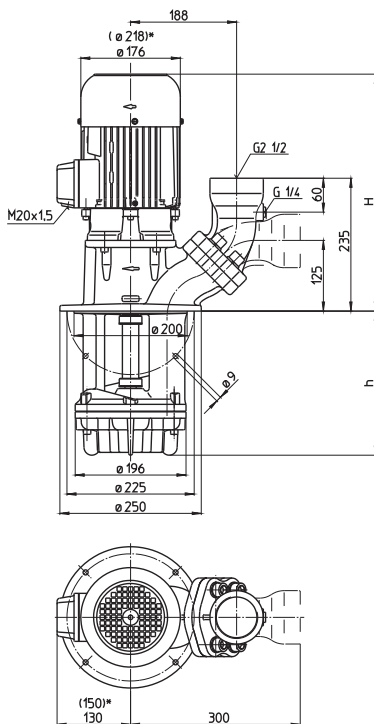


Quick suctioning immersion pumps

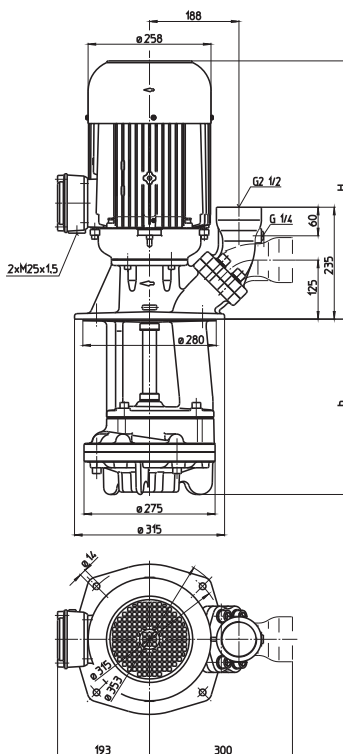
Axial/semi-open impellers

SFL650-2350

SFL650, 850 SFL1150



SFL1350...2350



*) Dimensions for SFL1150
Dimensions SFL2350 above flange as with
SGL1402

Type	Vol. del. at manom. del. head l/min /m	Height H mm	Depth of im- mersion h mm	Weight kg	Power kW	Voltage 3 ~ V	Fre- quency Hz	Rated current A	Speed 1/min
SFL650/220	400/8	419	220	49	2.2	220-240	50	9.2	2850
320			320	51					
450			450	53					
570			570	56					
770			770	61					
1000			1000	68					
SFL850/230	500/9	429	230	51	2.6	220-240	50	10.9	2850
330			330	53					
460			460	55					
580			580	58					
780			780	63					
1010			1010	70					
SFL1150/230	600/10	468	230	58	4.0	220-240	50	16.5	2900
330			330	60					
460			460	62					
580			580	65					
780			780	70					
1010			1010	77					
SFL1350/310	700/13	504	310	95	5.5	220-240	50	22.0	2900
440			440	97					
560			560	99					
810			810	107					
1060			1060	110					
SFL1550/310	900/15	542	310	103	7.5	220-240	50	29	2900
440			440	105					
560			560	107					
810			810	113					
1060			1060	115					
SFL1850/310	1150/15	592	310	122	10.0	220-240	50	40	2900
440			440	125					
560			560	127					
810			810	133					
1060			1060	135					
SFL2350/340	1400/28	938	340	150	18.5	400	50	32	2940
470			470	152					
590			590	154					
840			840	170					
1090			1090	172					
					21.3	460	60	31.5	3540



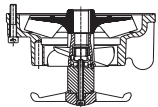
Quick suctioning immersion pumps

Axial/semi-open impellers

SFL650-2350

Quick Suctioning Immersion Pumps

series SFL equipped with the patented "BRINKMANN's Suction De-aeration System" are excellently suited to pumping **extremely inflated fluids** (emulsions) **with heavy chip loads** as they occur in heavy cutting when turning, milling or grinding. The quick suctioning immersion pumps reach stable working conditions as soon as the liquid level reaches the suction inlet. The SFL serie offers a **flange** with pressure gauge connection port. The flange can be rotated for either horizontal or vertical pipe connections.



These pumps are available (upon request) with an additional agitator at the pump suction for breaking up and separating large bundles of chips.



Applications

Types of fluid
 water
 coolants
 cooling/cutting oils
 Max. chip to coolant ratio by weight:
 1.0 %
 Chip material:
 Aluminium, steel, coloured steels
 Kinematic viscosity
 ...90 mm²/s (90 cSt)
 Pumping temperature
 0...80° C

Construction

Pump body	cast iron
Cover	cast iron
Impeller axial	cast steel
Impeller radial	cast steel
Shaft	steel
Optional:	
Execution CM1	
Impeller radial	
Execution CM3	
Cover	CrMo-steel
Impeller axial	
Impeller radial	

