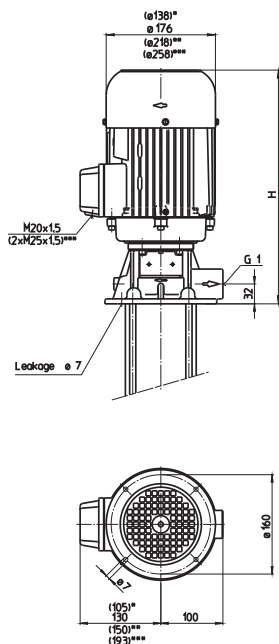
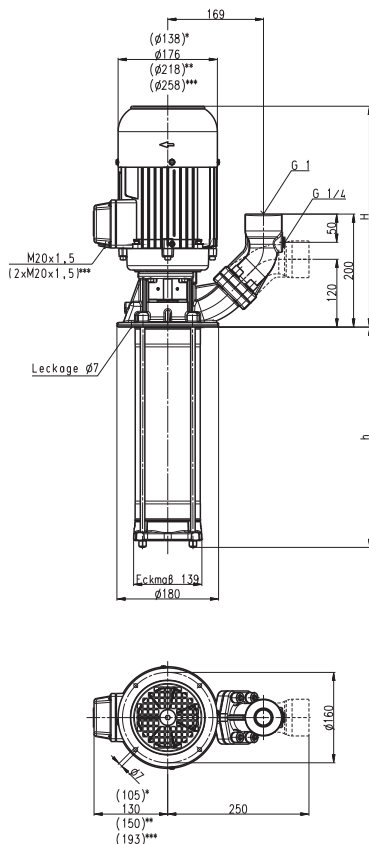


TH603...624



STH603...624



- *) Dimensions for (S)TH603...(S)TH605
 **) Dimensions for (S)TH613...(S)TH617
 ***) Dimensions for (S)TH618...(S)TH624

| Type | Vol. del. at manom. del. head l/min / m | Height H mm | Depth of immersion h mm | Weight kg | Power kW | Voltage 3 ~ V | Fre- quency Hz | Rated current A | Speed 1/min |
|--------------|--|----------------|----------------------------|--------------|-------------|---------------------|----------------------|-----------------------|----------------|
| (S)TH603B190 | 80/28 | 291 | 190 | 16.4 | 0.75 | 460 | 60 | 2.2 | 3300 |
| (S)TH604B190 | 80/38 | 309 | 190 | 17.5 | 0.92 | 460 | 60 | 2.7 | 3300 |
| (S)TH605B240 | 80/48 | 329 | 240 | 18.3 | 1.1 | 460 | 60 | 2.9 | 3300 |
| (S)TH606B240 | 80/58 | 352 | 240 | 25.4 | 1.5 | 460 | 60 | 3.8 | 3400 |
| (S)TH607B290 | 80/68 | 352 | 290 | 29.7 | 1.7 | 460 | 60 | 4.1 | 3400 |
| (S)TH608B290 | 80/78 | 376 | 290 | 33.8 | 1.9 | 460 | 60 | 4.9 | 3400 |
| (S)TH609B340 | 80/88 | 376 | 340 | 34.5 | 2.2 | 460 | 60 | 5.3 | 3400 |
| (S)TH610B340 | 80/98 | 386 | 340 | 35.1 | 2.6 | 460 | 60 | 6.3 | 3400 |
| (S)TH611B390 | 80/108 | | 390 | 35.6 | | | | | |
| (S)TH612B390 | 80/118 | | | 35.7 | | | | | |
| (S)TH613B490 | 80/128 | 441 | 490 | 49.6 | 3.3 | 460 | 60 | 8 | 3450 |
| (S)TH614B490 | 80/139 | | | 49.7 | | | | | |
| (S)TH615B490 | 80/149 | | | 49.8 | | | | | |
| (S)TH616B490 | 80/159 | 441 | 490 | 52.3 | 4.0 | 460 | 60 | 9.5 | 3450 |
| (S)TH617B590 | 80/168 | | 590 | 52.8 | | | | | |
| (S)TH618B590 | 80/178 | 477 | 590 | 69.4 | 5.0 | 460 | 60 | 12 | 3450 |
| (S)TH619B590 | 80/188 | | | 69.5 | | | | | |
| (S)TH620B590 | 80/198 | | | 69.6 | | | | | |
| (S)TH621B690 | 80/206 | | 690 | 70.1 | | | | | |
| (S)TH622B690 | 80/214 | | | 70.2 | | | | | |
| (S)TH623B690 | 80/222 | 477 | 690 | 71.2 | 5.5 | 460 | 60 | 12.5 | 3450 |
| (S)TH624B690 | 80/232 | | | 71.3 | | | | | |



Immersion pumps

Closed impellers

(S)TH6 - 60 Hz

Immersion Pumps

series TH and FH use **closed impellers** in order to minimize power consumption and to optimize hydraulic pump efficiencies. In addition, the TH series offers high pressures at short immersion depths. Inline pumps of the series FH can be used as **boosting pumps** if provided with positive inlet pressure. This inlet pressure can be provided by the central coolant supply or a feed pump. In such a setup, pumps of the series FH can raise the incoming pressure by up to 26 bar.

Extended length is possible. See mechanical/hydraulic features within the technical information section.

Applications

Types of fluid
 water
 coolants
 cooling/cutting oils
 Kinematic viscosity
 ...25 mm²/s (25 cSt)
 Pumping temperature
 0...80° C



Construction

| | |
|---------------------|-------------|
| Pump body | cast iron |
| Cover | cast iron |
| Impellers | CrNi-steel |
| Shaft | CrNi-steel |
| Diffusers | CrNi-steel |
| Mechanical seal | SiC |
| O-rings | Viton |
| Optional: | |
| Pole-changing motor | 4 - 2 poles |
| Pump body | bronze |
| Cover | bronze |
| Noise level | |
| (S)TH603...(S)TH605 | 61 dBA |
| (S)TH606...(S)TH612 | 66 dBA |
| (S)TH613...(S)TH624 | 75 dBA |

