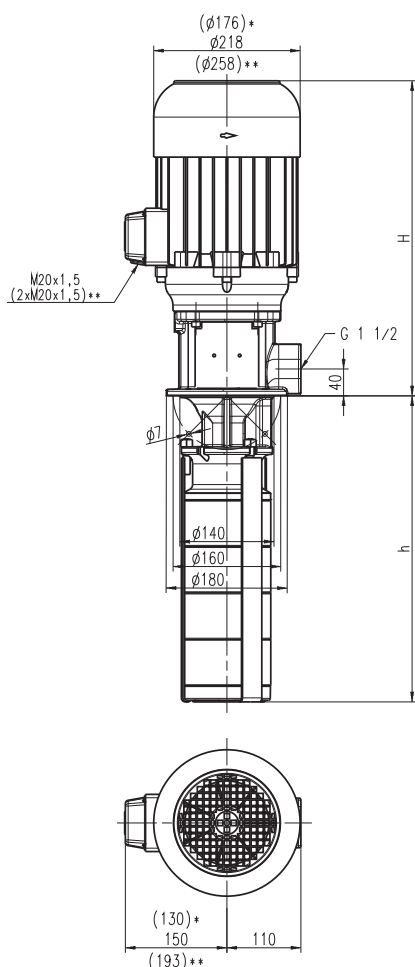
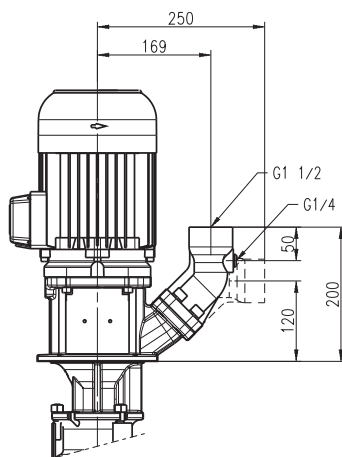


TC260/460...1150 TC460/320...870



STC260, STC460



*) Dimensions for TC260/460, TC460/320

**) Dimensions for TC260/690 - 1150,
TC460/530 - 870

Type	Vol. del. at manom. del. head l/min /m	Height H mm	Depth of im- mersion h mm	Weight kg	Power kW	Voltage 3 ~ V	Fre- quency Hz	Rated current A	Speed 1/min
TC260/460	250/30	415	455	41	2.6	220-240 380-420 460	50 50 60	10.9 6.3 6.3	2850 2850 3400
TC260/600	250/50	468	593	57	4.0	220-240 380-420 460	50 50 60	16.5 9.5 9.5	2900 2900 3450
TC260/690	250	504	685	73	5.5	220-240 380-420 460	50 50 60	22.0 12.5 12.5	2900 2900 3450
TC260/920	250/95	542	915	93	7.5	220-240 380-420 460	50 50 60	29 17 17	2900 2900 3450
TC260/1150	250/130	592	1145	101	10.0	220-240 380-420 460	50 50 60	40 23 23	2900 2900 3450
TC460/320	450/15	405	317	36	2.2	220-240 380-420 460	50 50 60	9.2 5.3 5.3	2850 2850 3400
TC460/390	450/24	468	386	49	3.3	220-240 380-420 460	50 50 60	13.8 8.0 8.0	2900 2900 3450
TC460/460	450/34	468	455	55	4.0	220-240 380-420 460	50 50 60	16.5 9.5 9.5	2900 2900 3450
TC460/530	450/42	504	524	69	5.5	220-240 380-420 460	50 50 60	22.0 12.5 12.5	2900 2900 3450
TC460/740	450/69	542	731	88	7.5	220-240 380-420 460	50 50 60	29 17 17	2900 2900 3450
TC460/870	450/90	592	869	103	10.0	220-240 380-420 460	50 50 60	40 23 23	2900 2900 3450

Immersion pumps

Closed impellers

TC260, TC460

Immersion Pumps

The immersed parts of types TC260 to TC460 are made of stainless steel. They are designed for use on **central coolant systems** and CNC machining centers with **internally cooled tools**.

Extended length is possible. See mechanical/hydraulic features within the technical information section.

Applications

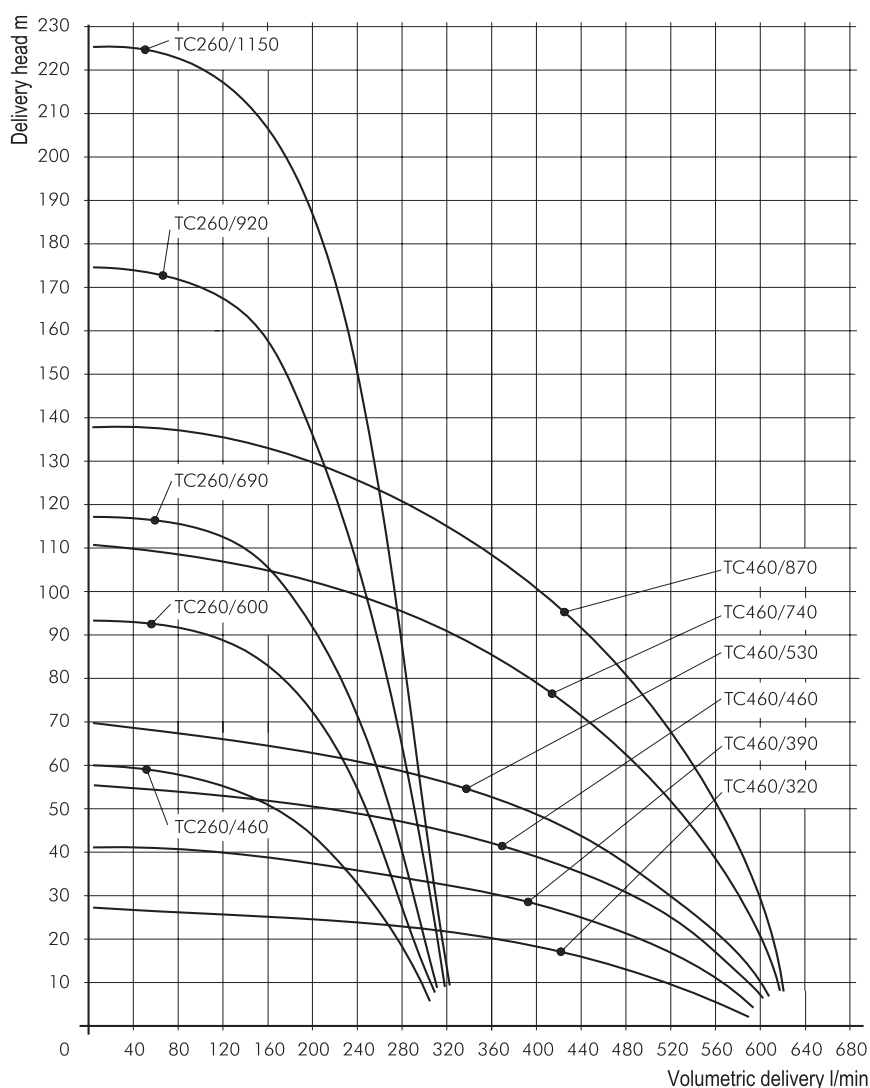
Types of fluid
coolants
cooling/cutting oils
Kinematic viscosity
...30 mm²/s (30 cSt)
Pumping temperature
0...80° C

Construction

Pump body	cast iron
Intake strainer	CrNi-steel
Impellers	CrNi-steel
Shaft	Cr-steel
Diffusers	CrNi-steel
Mechanical seal	SiC

Optional:
Pole-changing motor 4 - 2 poles

Noise level	
TC260/460	63 dBA
TC460/320	
TC260/600...TC260/690	70 dBA
TC460/390...TC460/530	
TC260/920...TC260/1150	74 dBA
TC460/740...TC460/870	



Pumps & Equipment (Warwick) Ltd. 6 Collins Road Heathcote Industrial Estate, Warwick CV34 6TF
Telephone: 01926 451744 | Fax: 01926 451284 | www.pumps-equip.co.uk