



**Usages:**

The pumps are suitable to transfer liquids containing impurities measuring up to 2-3 mm. The hydraulic components, namely the impeller in brass and the scroll in cast iron allow the pumps to be used with water, emulsions, oily substances and liquids in general with a maximum viscosity of 3° Engler (21 CST) and a maximum temperature of 90° C.

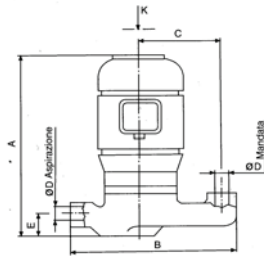
They are usually used in cases where there is no space at the top of the tank.

They should be installed on the side of the tank to allow the liquid to enter straight into the suction mouth (see Figure).

In cases where the liquid is particularly dirty, the user is recommended to construct the tank in compartments to allow the dirt to deposit before it is stirred up by the pump.

To ensure a long life for the pump, never let it turn when it is dry since the mechanical seal is not self-lubricated.

**For other usages you are advised to consult our technical office.**

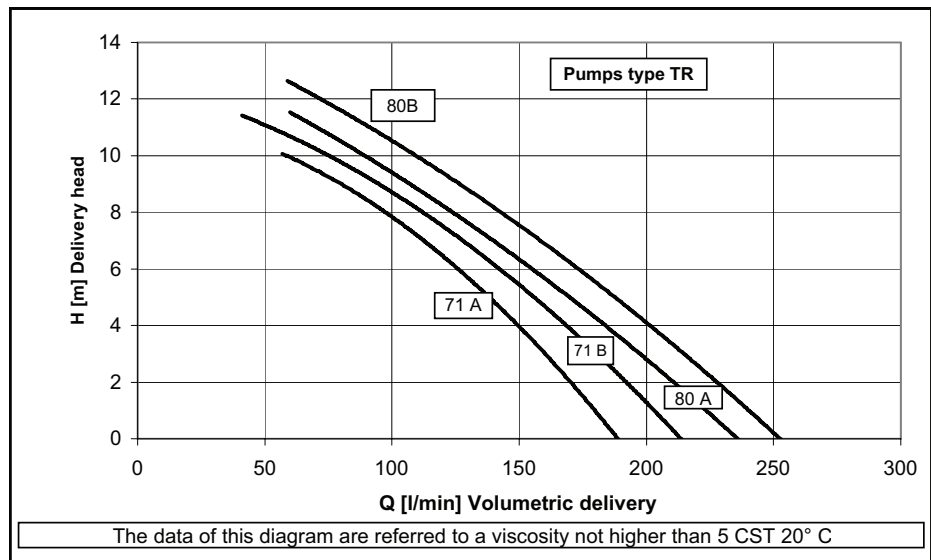
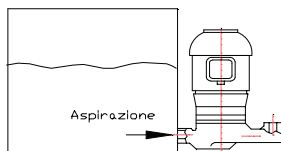
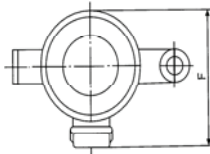


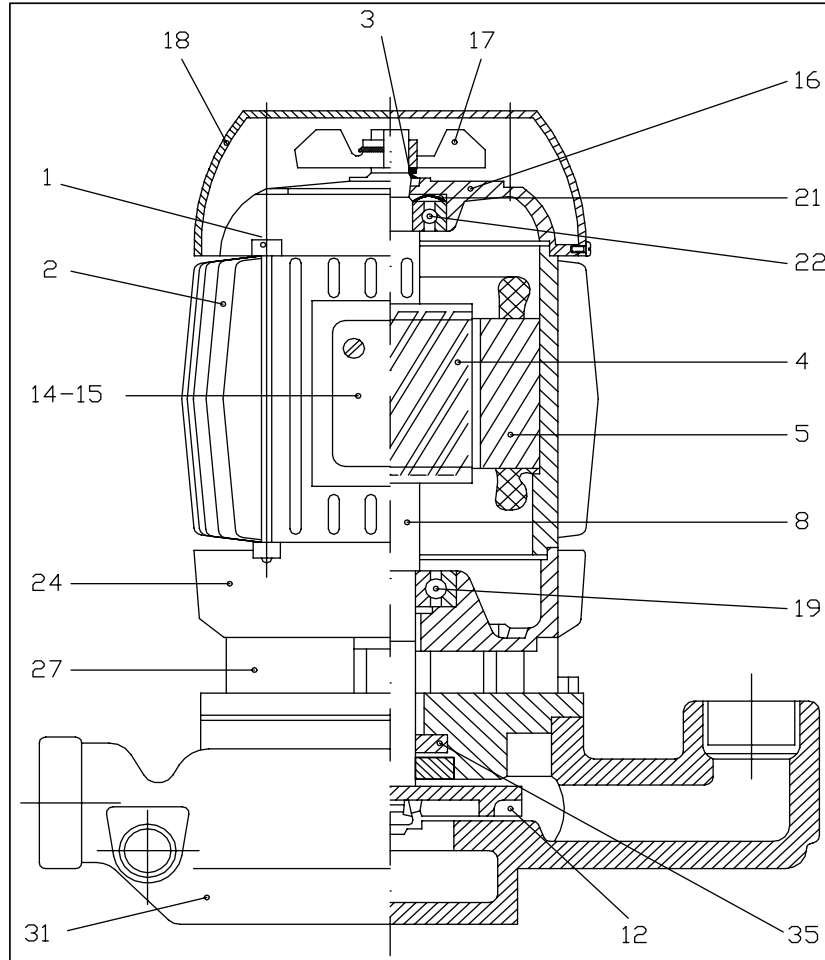
*Table of dimensions and weights*

TYPE	A mm	B mm	C mm	Ø D Gas	E mm	F mm	Kg.
TR 71 A	320	290	130	1"	40	220	12,10
TR 71 B	320	290	130	1"	40	220	13,00
TR 80 A	370	290	130	1"	40	220	13,90
TR 80 B	370	290	130	1"	40	220	14,70

*Electrical features*

TYPE	Kw Input	Hz. 50		Hz. 60			
		230/400	254-290/440-500	230/400	208-230/440-460	254-277/440-480	318-346/550-600
TR 71 A	0,53	2,40/1,40	1,94/1,12	3,00/1,68	2,6/1,50	2,40/1,40	2,00/1,17
TR 71 B	0,78	3,30/1,90	2,60/1,50	4,00/2,30	3,60/2,10	3,30/1,90	2,80/1,60
TR 80 A	1,15	3,30/1,90	2,60/1,50	4,00/2,30	3,60/2,10	3,30/1,90	2,80/1,60
TR 80 B	1,47	4,80/2,80	3,70/2,20	5,80/3,40	5,20/3,00	4,80/2,80	4,00/2,30





Type	TR 71 A	TR 71 B	TR 80 A	TR 80 B
<b>Components</b>	<b>Materials</b>	<b>Materials</b>	<b>Materials</b>	<b>Materials</b>
1 Rod	Steel	Steel	Steel	Steel
2 Frame	Aluminium	Aluminium	Aluminium	Aluminium
3 V-Ring	NBR ø 16	NBR ø 16	NBR ø 20	NBR ø 20
4 Rotor				
5 Stator				
8 Shaft	Steel C 40	Steel C 40	Steel C 40	Steel C 40
12 Impeller	Brass	Brass	Brass	Brass
14 Terminal box	Nylon	Nylon	Nylon	Nylon
15 Terminal block	mm. 40x25 6P	mm. 40x25 6P	mm. 50X32 6P	mm. 50X32 6P
16 Non-drive end shield	Aluminium	Aluminium	Aluminium	Aluminium
17 Fan	Nylon	Nylon	Nylon	Nylon
18 Fan cover	Nylon***	Nylon***	Nylon***	Nylon***
19 Bearing	6204 ZZ	6204 ZZ	6304 ZZ	6304 ZZ
21 Spring ring	ø 40	ø 40	ø 47	ø 47
22 Bearing	6203 ZZ	6203 ZZ	6204 ZZ	6204 ZZ
24 Flange	Aluminium	Aluminium	Aluminium	Aluminium
27 Bridle dap joint	Cast iron G20	Cast iron G20	Cast iron G20	Cas iron G20
31 House impeller	Cast iron G20	Cast iron G20	Cast iron G20	Cast iron G20
35 Mechanical seal	ø 19 Viton	ø 19 Viton	ø 19 Viton	ø 19 Viton

